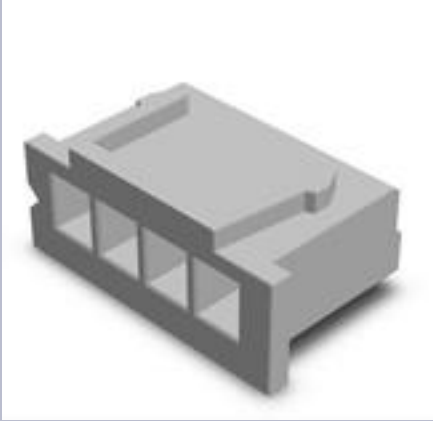
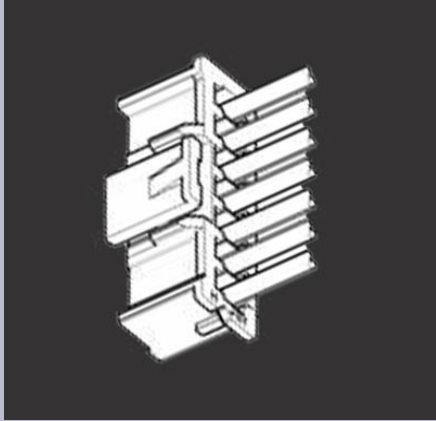


HOW TO No. 9 --- Balance Connectors

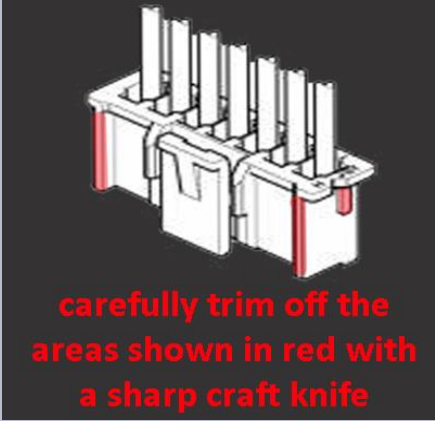
I have noticed a few people asking about the connectors used on LiPo charger balance leads. There are two main connectors for the charger end of a balance lead. The first and most popular is the JST XHP range, these are usually 3way or 7 way. The other connector is the TP/FP connector, unfortunately they are hard to source, however with a little modification the JST XAP range can be made to work. Graphics for both these connectors are shown below.



JST XHP Connector



JST XAP Connector



carefully trim off the areas shown in red with a sharp craft knife

The XAP connector would need to be trimmed as shown above

The part numbers for the connectors are:
 XHP-x "x=number of ways i.e. a 7 way is XHP-7"
 XHP crimp to suit above = BXH-001T-P0.6
 XAP-x "x=number of ways i.e. a 7 way is XAP-07v (v=natural colour)"
 XHP crimp to suit above = BXA-001T-P0.6
 The above are usually available from ebay or electronic distributors such as R.S or Farnell

The other connectors tend to be referred to just as "GOLD" connectors. Balance points on the LiPo's are 99% of the time 2mm and the output on chargers tend to be 4mm, the LiPo ones are usually 4mm or 5mm. These can be purchased from many places such as eBay or Hobbyking



It is best to use silicone wire. The balance wire can be about 22-24awg but please ensure you use a suitable size for the power (10awg or 12awg is advisable for high current charge/discharge use)